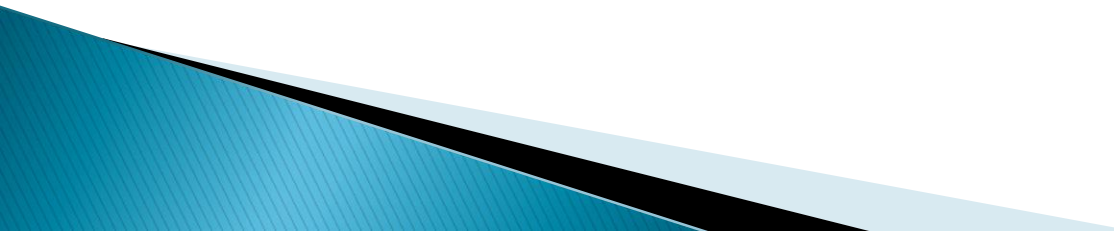




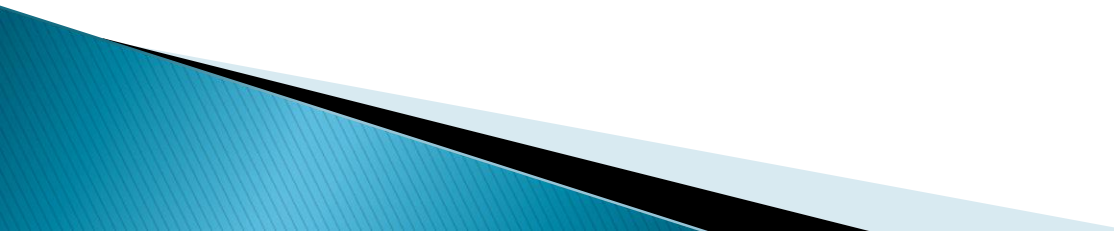
East Blaine Infrastructure Public Meeting

**Blaine City Council
September 24, 2012**

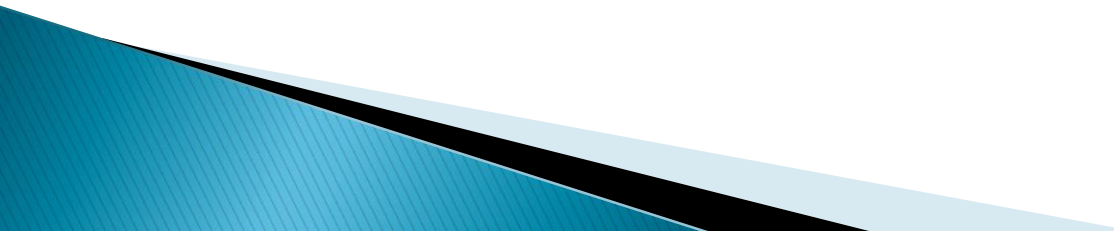
Presentation Outline

- ▶ Introduction
 - ▶ Historical Framework
 - ▶ Engineering Report
 - ▶ H Street Alternative
 - ▶ Alternative Comparison
 - ▶ Conclusions
 - ▶ Questions
- 

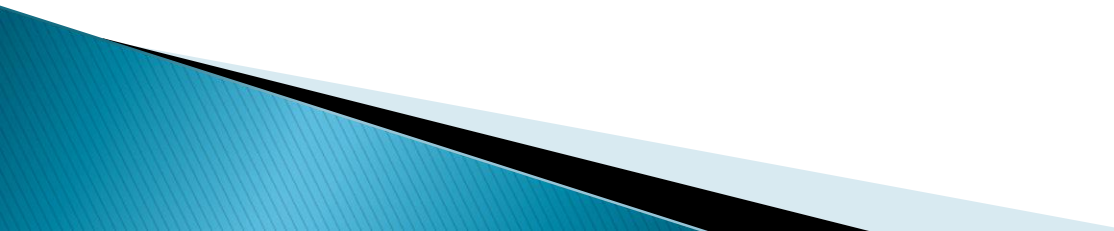
Introduction

- ▶ **Overview**
 - ▶ **Goals of Public Meeting**
 - ▶ **Work Completed**
- 

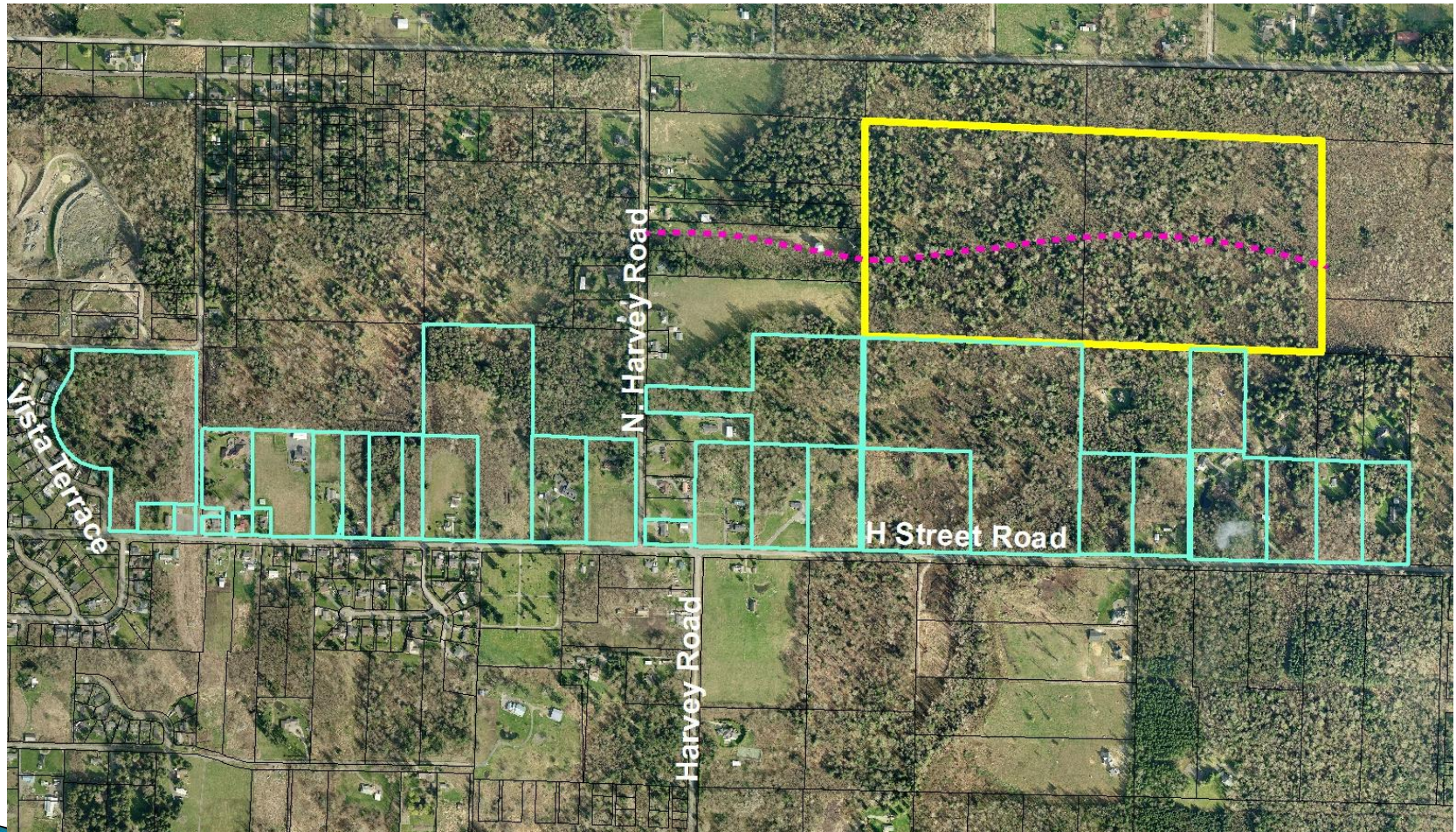
Historical Framework

- ▶ **1996 Annexation of East Blaine**
 - ▶ **2007 CHS Infrastructure Plan**
 - ▶ **City Develops East Blaine Infrastructure Plan 2008**
 - ▶ **City Council Approval October 2009**
 - ▶ **EMR, Bridges and GP Revised Designs**
 - ▶ **H Street Sewer Constructed**
 - ▶ **Lincoln Park Sewer Corridor Designed & Approved**
- 

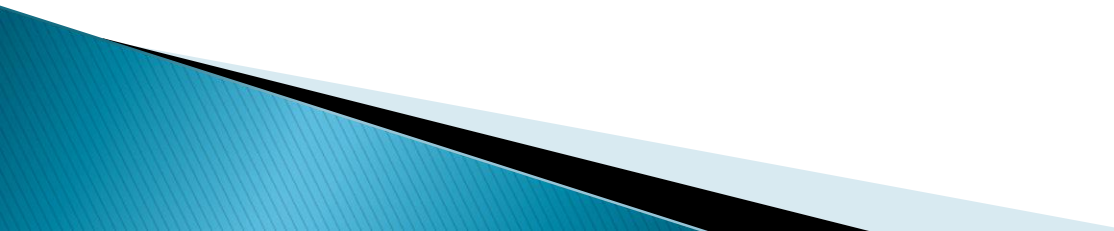
Engineering Report Motts Hill Alignment

- ▶ **Property Information**
 - ▶ **Critical Areas**
 - ▶ **Soils**
 - ▶ **Sewer alignment and slope**
 - ▶ **Water and other utilities**
 - ▶ **Street corridor feasibility**
- 

Property Ownership Map



H Street Alternative Alignment

- ▶ **Right of Way**
 - ▶ **Wetlands**
 - ▶ **Streams**
 - ▶ **Sewer**
 - Depth
 - Gravity vs. Pump Station
 - System challenges
 - ▶ **Water**
 - ▶ **Street**
 - ▶ **Cost**
- 

Alternative Comparison

Motts Hill Alignment

- ▶ **Sewer Utility**
 - Gravity
 - Shallow
 - No impacts to new street
- ▶ **Right of Way Acquisition**
 - Single owner
- ▶ **Environmental**
 - Minimum Impacts
- ▶ **Other utilities**
 - No conflicts
 - Aids water reliability

H Street Alignment

- ▶ **Sewer Utility**
 - Pumping required
 - Deep
 - Tear up new street
- ▶ **Right of Way Acquisition**
 - Multiple owners
- ▶ **Environmental**
 - Streams and Wetlands
- ▶ **Other utilities**
 - Multiple conflicts

Conclusions

- ▶ **Philosophical**
 - ▶ **Site**
 - ▶ **Cost**
 - ▶ **Timing**
- 
- A decorative graphic element in the bottom-left corner of the slide, consisting of overlapping blue and black geometric shapes.



Typical Cross Section

