

A Picture Is Worth A Thousand Words...

Distribution of Appeal for Highway Signage and Support

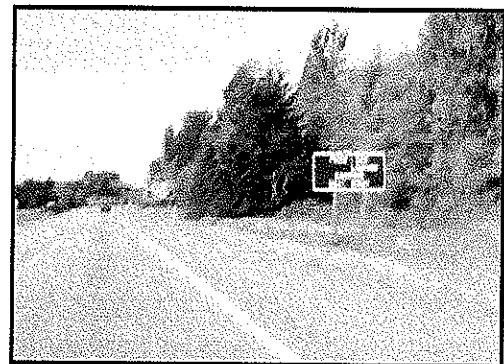
Blaine Harbor Advocates
Chamber of Commerce
Birch Bay Chamber of Commerce
M. Kent, Bay Area Marketing
Jacaronda Land Co, et al
Blaine Harbor Area Business Owners
City Council
City Manager
Local Media
Governor Gregoire, State of Washington
Area Legislators, 40th - 42nd District
BATC Tax Committee
State Economic Dev Associations
Economic Dev Councils
Ray George and Associates
...And other interested parties



Peace Portal. Where's Blaine Harbor?



Most Important Exit Needs Color Sign



***Services Crossed Out
No Mention of Blaine Harbor!***

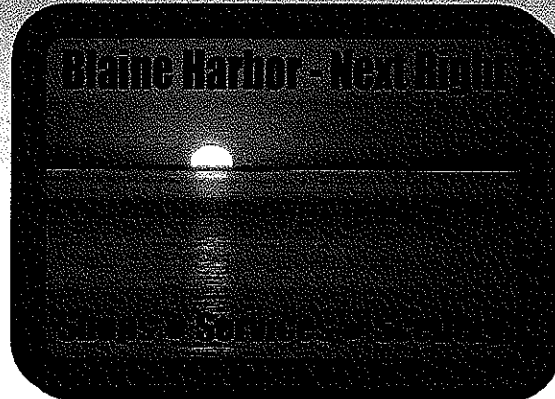
CAN YOU HELP? WILL YOU HELP?

We are asking the organizations or individuals on the reverse side to join us in gaining your support for relief - if they haven't already. We thank you in advance and promise to distribute your response to them and to other concerned citizens.

Blaine Harbor Advocates
1300 Peace Portal • Blaine, WA 98230
Ph: 360-734-2222/332-6960 • Fax: 360-366-2278

September 26, 2006

David McCormick, PE
WSDOT NW Regional Office
15700 Dayton Ave N
PO Box 330310
Seattle WA 98133-4697
Phone: 206-440-4697
Fax: 206-440-4697



RE: LACK OF SIGNAGE HAS SERIOUSLY HAMPERED BLAINE'S ECONOMICS

We are directing this to you in hopes that you might investigate the facts and provide relief and hopefully some much needed action.

FACTS:

1. Blaine has experienced a low increase in sales revenue between 2002-2005.
2. Blaine has lost over 120 businesses within an 8-mile radius in the past 8 years.
3. Semiahmoo has numerous directional signs in many locations, yet Blaine is even more vital but has only two exit signs of note.
4. Blaine needs a colorful photographic sign, with descriptive wording, that is effective, within the rights-of-way, North and South
5. Over 2.5 million persons pass on I-5 in both directions, but less than 1% of them stop in the Blaine Harbor (downtown) area.
6. Blaine has many wonderful features - both historic and scenic- that deserve being visited by folks from Canada and elsewhere. Blaine Harbor is essentially an historic marine-related village.
7. We encourage the use of "Blaine Harbor" as a means of being inclusive of our waterfront features, Drayton Harbor in association with Semiahmoo, as well. "Blaine Harbor" is a two word description, *not a name change*. It pools the resource into a descriptive phrase.
8. We will need both political and administrative support to obtain these signs. Blaine Harbor Advocates (organization) will pay the costs.
9. Both "on" and "off" rights-of-way options can be considered and would be welcome! Both will require interpretive permit language or administrative "special conditions," we believe.

Sincerely,

James R. McCormick
Blaine Harbor Advocates

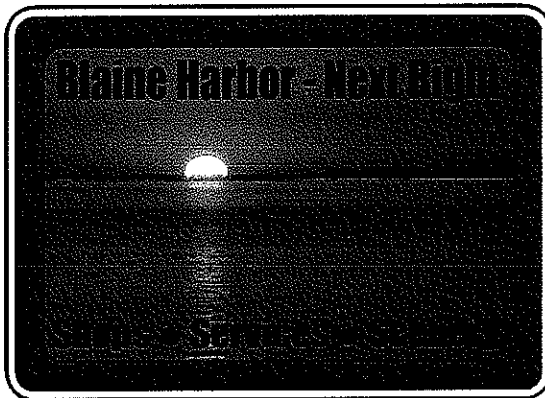
Blaine Harbor Advocates
1300 Peace Portal • Blaine, WA 98230
Ph: 360-734-2222/332-6960 • Fax: 360-366-2278

Your Opinion Can Count!

We are asking the state D.O.T. to describe our city with picture highway signs.

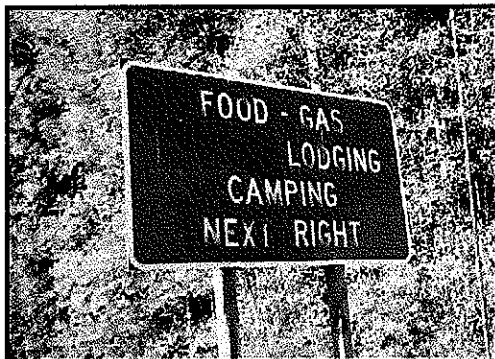
You Can Help!

Check the box next to your preferred highway billboard.



☐ I prefer this sign

I prefer this sign ☐



☐ I prefer this sign

Which sign best represents a community with 4 square miles of bay, 2 marinas, seals, stores, recreation services, groceries, restaurants, homes for sale, business opportunities and more?

*Please mail or deliver to Blaine (Harbor) Associates
1300 Peace Portal Drive, Blaine WA 98230
fax to 360-647-9223*

or email to harborland@aol.com

For more information call (360) 734-2222 or 332-6460
seascapebay.com

*** TX REPORT ***

JOB NO. 1064
DEPT. ID 504
ST. TIME 10/17 11:22
PGS. 3

SEND DOCUMENT NAME joel douglas fax

TX/RX INCOMPLETE -----

TRANSACTION OK
gtomsic@cityofblaine.com
ssanchez@cityofblaine.com
mriley@cityofblaine.com
sbanham@cityofblaine.com
tgalvin@cityofblaine.com
mhaslip@cityofblaine.com

Gary Tomsic
Sheri Sanchez
Meredith Riley
Stephen Banham
Terry Galvin
Mike Haslip

ERROR -----

Washington Pilots in Support of the Blaine Airport

Dear Blaine City Council,

I support the Blaine Airport 4W6 and ask that you take the necessary action to maintain it's status as a vital link in our nation's transportation system.

I also ask that you please approve the Master Airport Expansion Plan currently before you.

Sincerely,

(signature) 

Name: BRUCE A. BARR

Address: 208 S. WASHINGTON ST., MEDICAL LAKE, WA 99022

Aircraft C-208 (FEDEX) N

Comments: AIRPORTS SUCH AS BLAINE BENEFIT EVERYONE, NOT
JUST PILOTS. I KNOW THAT YOU WILL ACT IN THE BEST
INTERESTS OF EVERYONE.