

10 July 2006

TO : Mr. Tomsic, *Blaine City Manager*
Blaine City Council
Blaine City Hall
FAX 332-8330

RE : Sewer billing clarification/Seascape condos metered internally

REQUEST FOR REVIEW/ADMINISTRATIVE DECISION

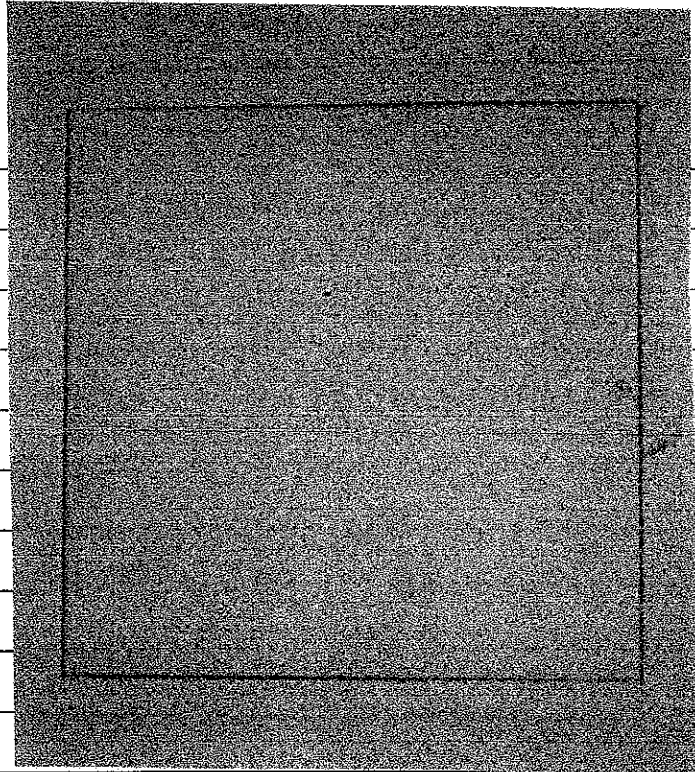
This is a very important matter : The Seascape Villas condominiums' C.C.& R.'s have been drafted to accommodate folks that may wish to be absent (away from home) weeks or months at a time. Consequently, we invested considerable funds in meters and valves to isolate each unit—except for the manager's unit. We understand the City ordinance is drafted for accounts fair billing. We are proposing that you incorporate and adopt The Seascape's unique metering engineering by adapting the City's billing structure to interface with its function :

- ♦ Each party will share in utilities and garbage fees in accordance with their direct use. This creates an atmosphere of conservation as well as on-site prevention of leaks and waste.
- ♦ The Seascape property itself is on a 2" meter, and we can be billed for water consumption based upon use for irrigation and for domestic use.
- ♦ Our valves at each entry (Except 400A) meter hot water and provide for shutting off all water to the unit. If cold water were used it would not read on individual unit-meters; however, if any inside valve or faucet admitted any hot water, it would be recorded. There is little chance that an occupied unit could get by without detection on the meter.

Photo
to follow

We are asking that The Seascape be monitored monthly by our manager with a monthly report being issued to the City utilities billing clerk.

A draft sample is attached. This could be retroactive from the date of the 1st Seascape billing.



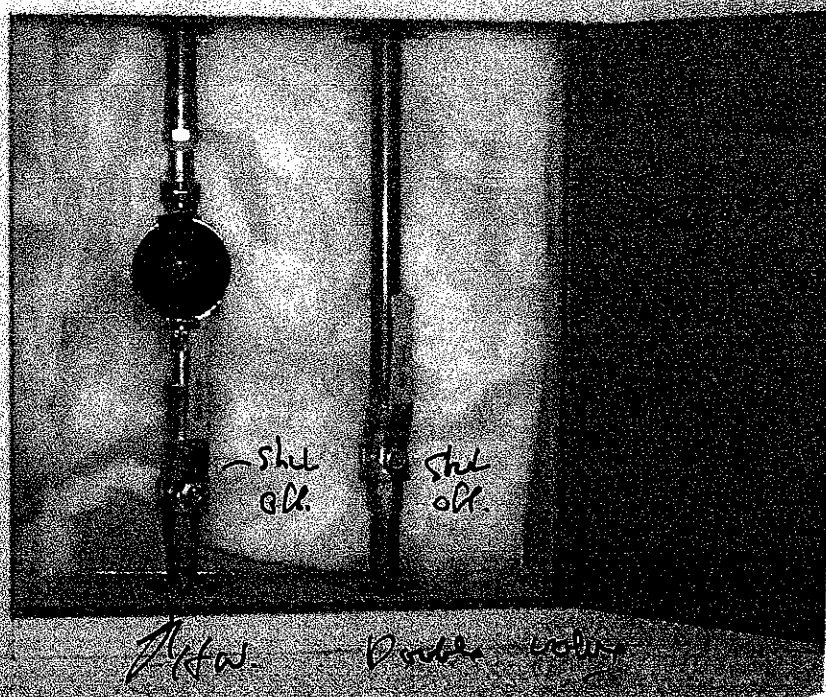
Approved By
Harbor Lands Co.

JUL 10 2006

360-734-8191

← Corner

Scanscene
Meter Boxes



Meter →



Coachman Inn

Grandview Business Center
Harbor Business Center



Harbor Lands Co.
Harbor Enterprises
Pacific Resources, Inc.

P.O. Box 4082
Bellingham, WA 98227
(360) 734-8191 734-2222
FAX (360) 647-9223