

2008 Development Status 1st Quarter Report



City of Blaine

How We Track Growth

By planning areas



Indicators of Growth in the Community

Part I - Development Permit Applications

What are they?

They are land use development proposals that are only counted when determined complete (vested).

Part II - Building Permit Approvals

What are they?

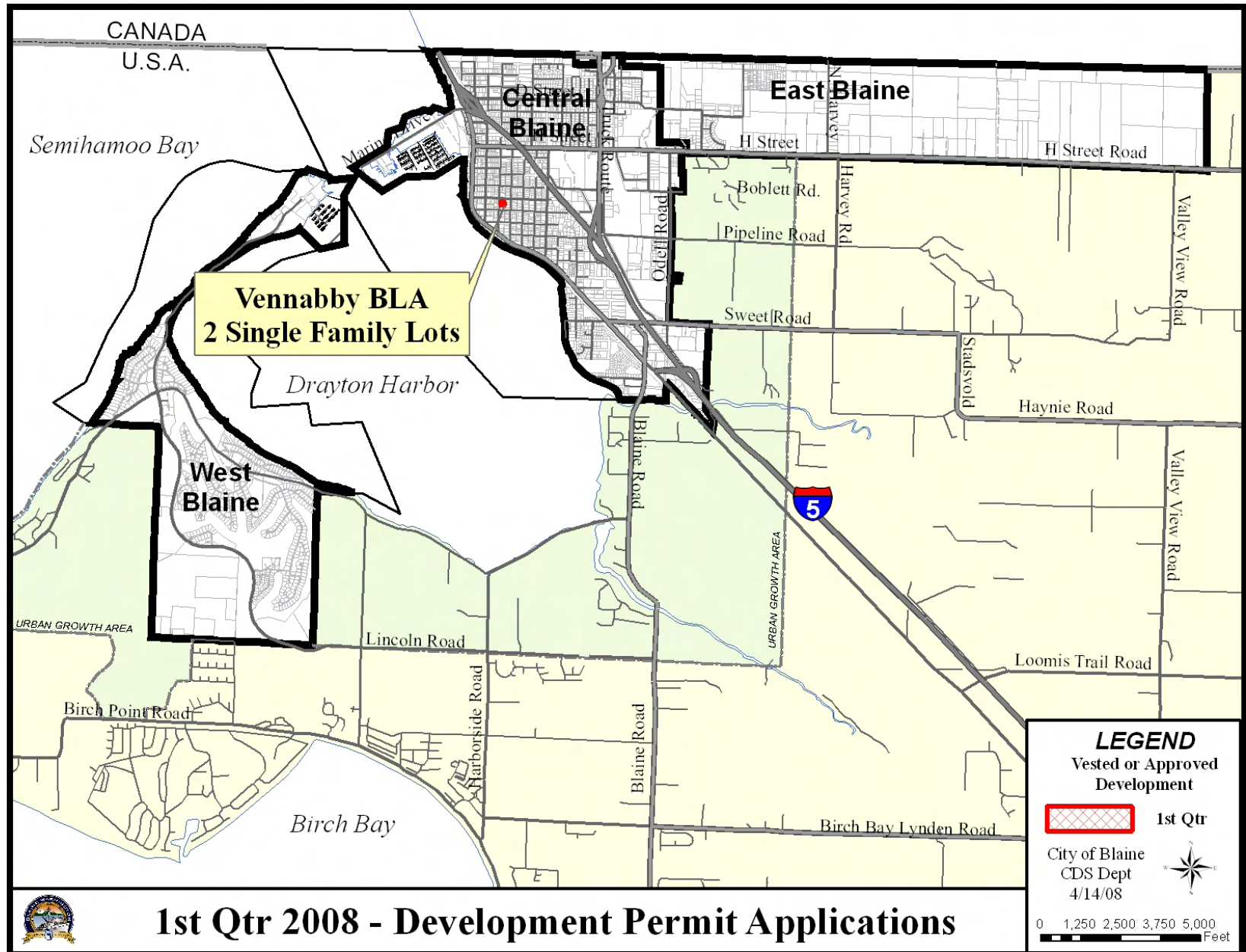
They are approved building permits.

Part III - Waste Water Connections

What are they?

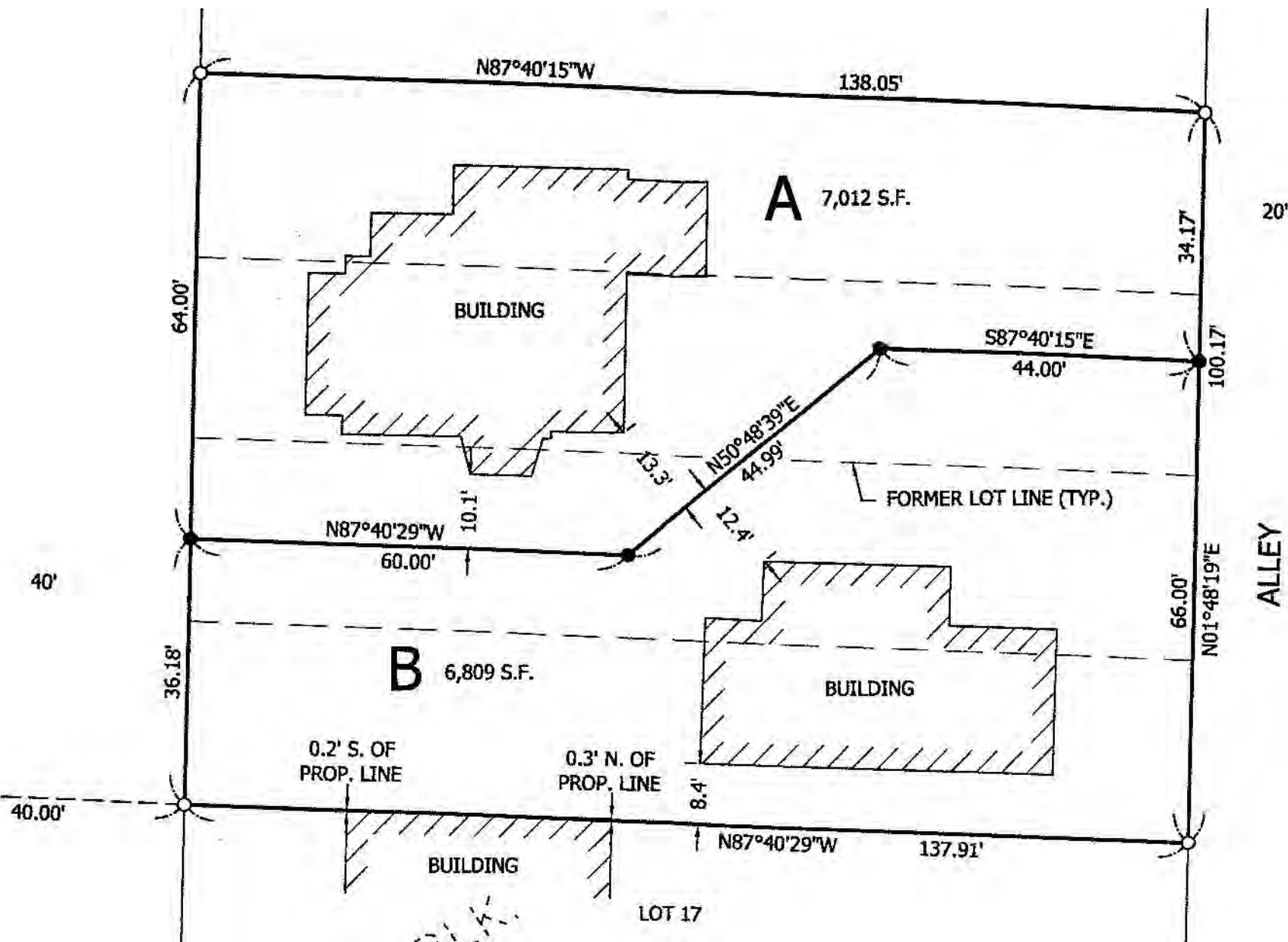
They are connections to the City waste water system that are vested when paid for with the building permit. They are measured in Equivalent Residential Units (ERU).

Part – I Development Permit Applications 2008 1st Qtr



Part – I Development Permit Applications 2008 1st Qtr

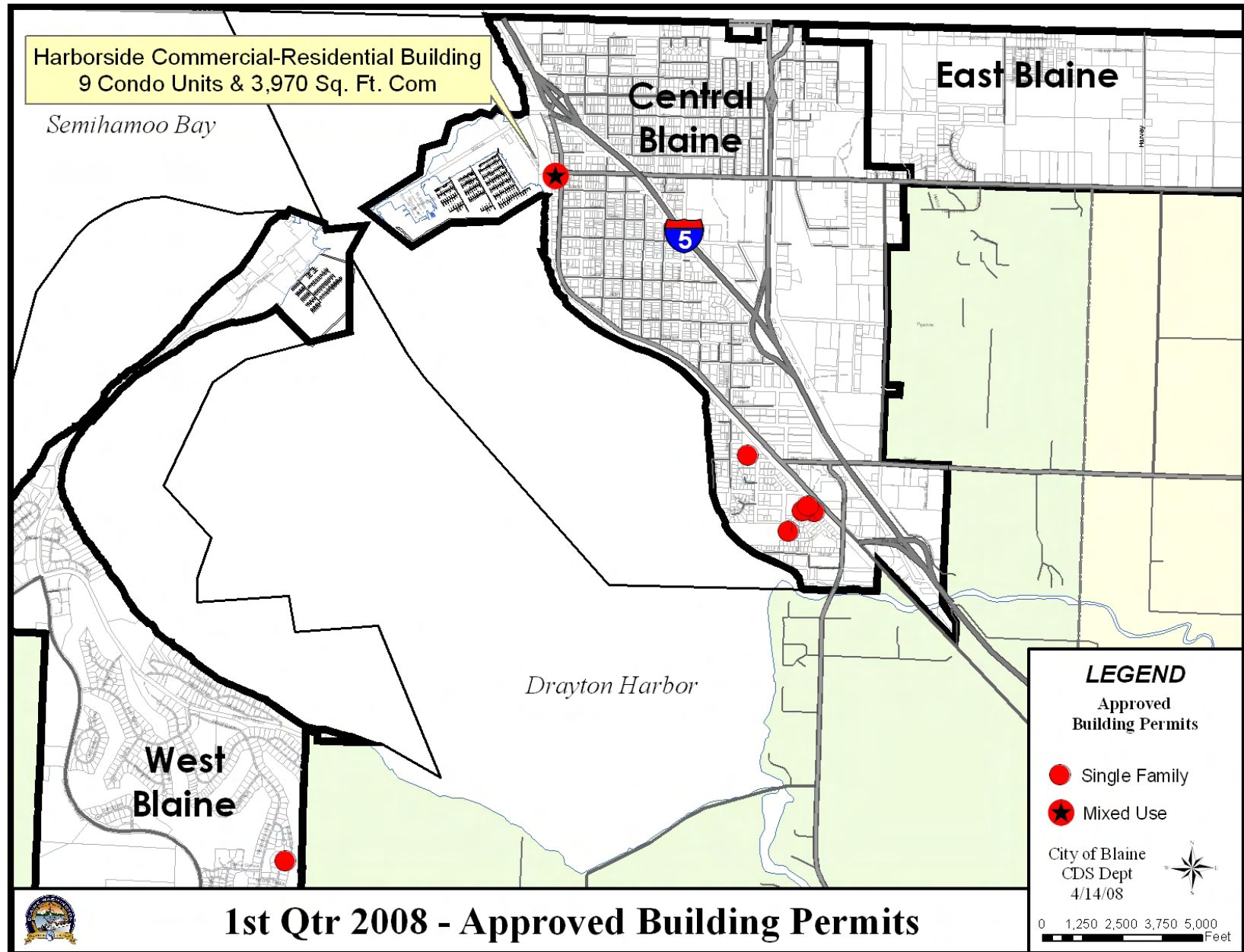
Vennabby (1140 4th Street) Boundary Line Adjustment



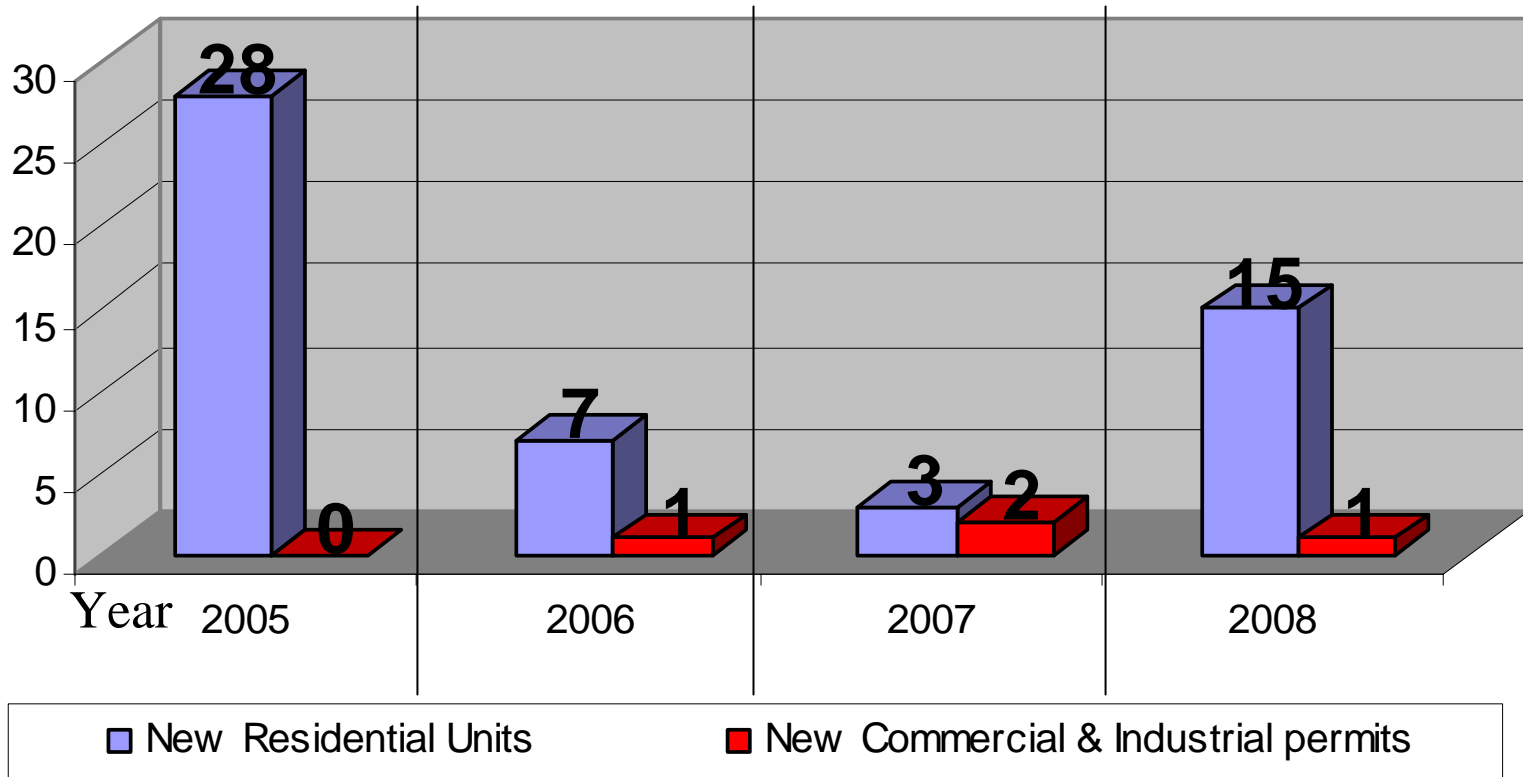
Part – II Approved Building Permits 2008 1st Quarter

Month	New Residential Units	New Commercial Units	New Industrial Units
January	1	0	0
February	13	1	0
March	1	0	0
1st Quarter Total	15	1	0

Part – II Approved Building Permits in 2008 (1st quarter)



Part – II Approved Building Permits 2005 to 2008 1st Quarter Comparison

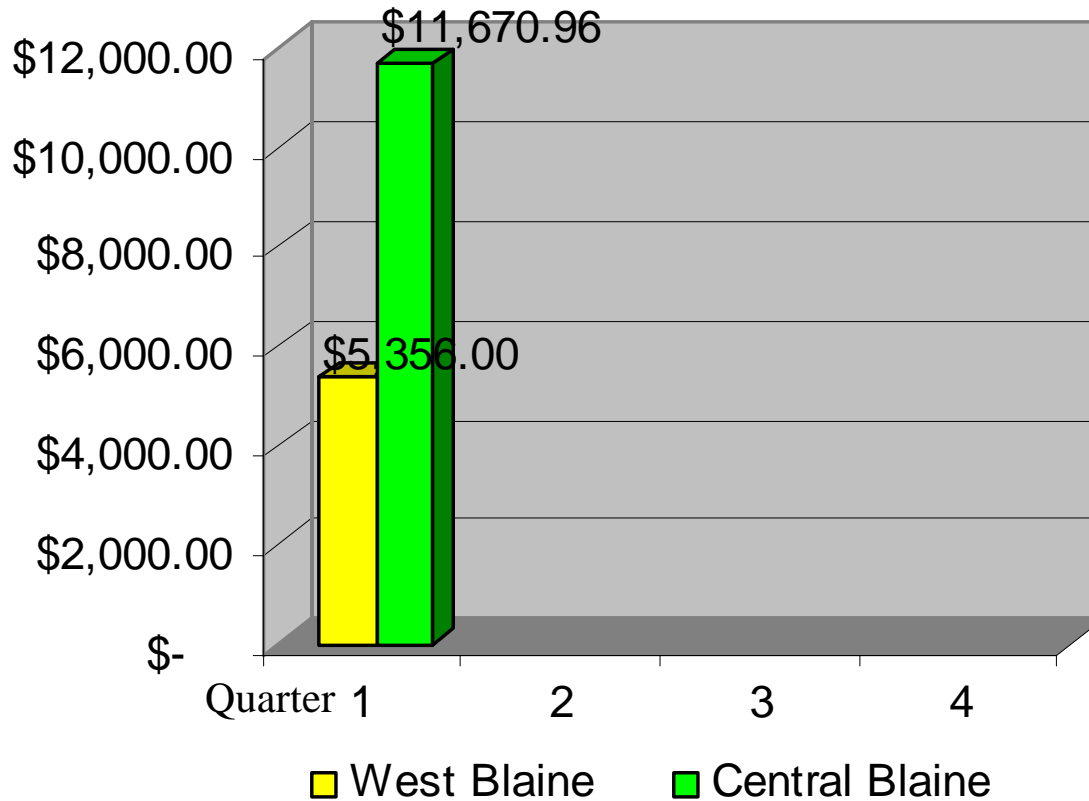


2008 1st Quarter – 6 Single Family and 9 Condo Units with 1 Commercial space

Part – III Waste Water Connections in 2008 1st Qtr

Sewer Connection Fees

Note: East Blaine is not serviced by the City Sanitary Sewer



Residential Totals

West Blaine

1 connection

Central Blaine

2 connections

East Blaine

No connections

2008 Development Status 1st Quarter Report



City of Blaine



DEPARTMENT OF COMMUNITY DEVELOPMENT

Building Permit Report

1st QUARTER

JANUARY – MARCH 2008

Enclosed is a summary of “building permit approvals” (approval to construct) for the 1st quarter (January thru March) of the year 2008. At the conclusion of March, building permits for new residential construction, created 14 new dwelling units. Staff has attached a more detailed record of building activity. Together they should provide Council members with an accurate assessment of development activity for the 1st quarter of the year 2008.

Building Permit Approvals January 1 to March 31, 2008

Month	New Residential Units	New Commercial Units	New Industrial Units
January	1	0	0
February	13	1	0
March	1	0	0
1st Quarter Total	15	1	0
April			
May			
June			
2nd Quarter Total			
July			
August			
September			
3rd Quarter Total			
October			
November			
December			
4th Quarter Total			
Totals To Date	15	1	0
<i>2007 same time</i>	3	2	0

Community Development
Building Permits - 2008
1st Quarter

City of Blaine - 2008 1st Quarter Commercial & Industrial Building Permits											
Permit Type	Applied # of Units	Permit number	Address	Valuation	Permit Fees	Street Impact Fee	Park Impact Fees	Utility Fees	Date Applied	Date Issued	Approved
Central Blaine											
Ind/Com Building	9	BLDG-69-05	715 Peace Portal	\$2,067,159.00					6/14/05	4/12/06	9
Sub-totals	9.00			\$2,067,159.00	\$0.00	\$0.00	\$0.00	\$0.00			9.00
East Blaine											
Sub-totals	0.00			\$0.00	\$0.00	\$0.00	\$0.00	\$0.00			0.00
West Blaine											
Sub-totals	0.00			\$0.00	\$0.00		\$0.00	\$0.00			0.00
Totals	9.00			\$2,067,159.00	\$0.00	\$0.00	\$0.00	\$0.00			9.00

City of Blaine - 2008 1st Quarter Residential Building Permits											
Permit Type	Applied # of Units	Permit number	Address	Valuation	Permit Fees	Street Impact Fee	Park Impact Fees	Utility Fees	Date Applied	Date Issued	Approved # of Units
West Blaine											
SFR	1	BLDG-15-08	8692 Great Horned Owl Lane	\$302,290.90	\$3,526.51	\$770.10	\$1,000.00	\$9,356.83	3/13/08	3/20/08	1
West Sub-totals	1.00			\$302,290.90	\$3,526.51	\$770.10	\$1,000.00	\$9,356.83			1.00
Central Blaine											
SFR	1	BLDG-56-07	1150 Huges Ave	\$151,240.54	\$2,324.77	\$770.10	\$1,000.00	\$10,053.54	12/5/07	1/7/08	1
SFR	1	BLDG-1-08	2450 Evans Drive	\$135,444.50	\$2,184.18	\$770.10	\$1,000.00	\$9,364.18	1/10/08	2/5/08	1
SFR	1	BLDG-2-08	2435 Baldwin Place	\$183,044.48	\$2,650.70	\$770.10	\$1,000.00	\$9,364.16	1/10/08	2/5/08	1
SFR	1	BLDG-3-08	2436 Evans Drive	\$139,955.00	\$2,195.89	\$770.10	\$1,000.00	\$9,364.16	1/10/08	2/5/08	1
SFR	1	BLDG-4-08	2539 Baldwin Place	\$226,799.89	\$3,053.02	\$770.10	\$1,000.00	\$9,364.16	1/10/08	2/5/08	1
Central Sub-totals	5.00			\$836,484.41	\$12,408.56	\$3,850.50	\$5,000.00	\$47,510.20			5.00
East Blaine											
East Sub-totals											
	0.00			\$0.00	\$0.00	\$0.00	\$0.00	\$0.00			0.00
Totals											
TOTALS FOR BOTH	15.00			\$1,138,775.31	\$15,935.07	\$4,620.60	\$6,000.00	\$56,867.03			15.00
				\$3,205,934.31	\$15,935.07	\$4,620.60	\$6,000.00	\$56,867.03			